

- MI-SAIL-S lighting fixture, built in the MIFOR-70 system
- Includes a light source and a wire suspension system
- Easy assembly
- Easy suspension height adjustment

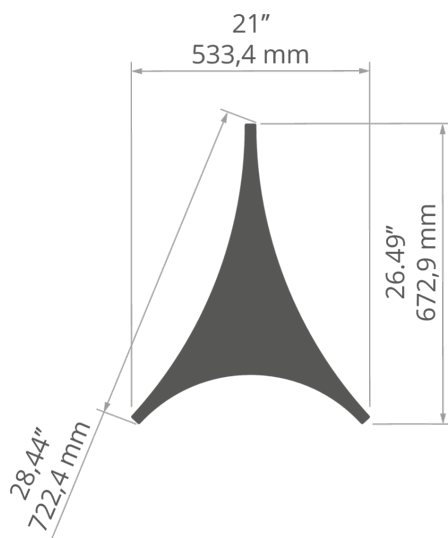
APPLICATION

- main and decorative lighting
- construction of lighting installations with flowing shapes

MOUNTING

- suspended, using dedicated accessories

TECHNICAL DRAWING

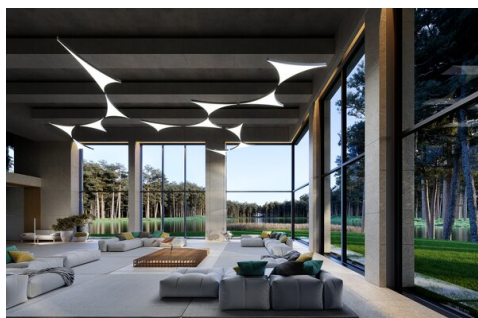
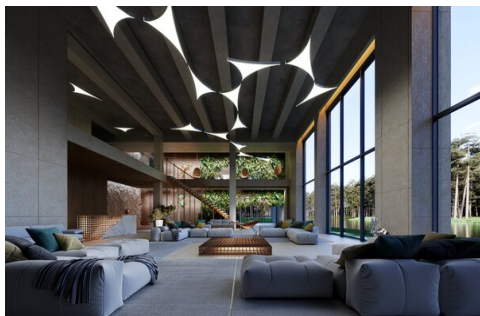


TECHNICAL SPECIFICATIONS

Material	aluminum
Color	■ silver anodized
Diffuser material	PC
Control type	wired on / off
Mounting type	Suspended
Length	722.4 mm
IP protection rating	20
Luminous flux of the fixture	1648 lm
Maximum luminous efficacy	78 lm/W
Closest color temperature	4000 K
Color rendering index	90 CRI

MacAdam's ellipse	3 SDCM
Input voltage	24 V
Power consumption	21 W
Protection class	III
Working temperature	10°C - 30°C
Weight	1.58 kg
Height	70 mm
Width	533.4 mm
Main lighting	yes
Decorative lighting	yes

SAMPLE PROJECTS



RELATED SYSTEMS > MIFOR-70 CUSTOM



MIFOR-70